



VibrosTech
SOLUTIONS BEYOND BOUNDARIES

VibrosTech Corp



AgriTechAI

35th Floor, Tower Financial Center, 50th
Street and Corner of Elvira Mendez Street,
Panama City, Panama

+507 63016312

www.vibrostech.com

Introduction

AgriTechAI is designed to revolutionize agriculture by combining modern technology like artificial intelligence (AI), machine learning (ML), drones, and the Internet of Things (IoT). By bridging the gap between tradition and innovation, the platform addresses inefficiencies in farming methods, helping farmers make informed decisions, boost productivity, and ensure sustainable practices. Through advanced data analysis and real-time monitoring, AgriTechAI empowers stakeholders to adapt to dynamic agricultural challenges with precision and reliability.

Problem Statement:

➔ Low Efficiency:

Traditional farming often results in lower yields and higher costs, making farming less profitable and less appealing to new generations of workers.

➔ Wasted Resources:

Excessive use of water, energy, and chemicals not only increases costs but also harms the environment by depleting natural resources and contributing to ecological imbalance.

➔ Labor Shortages:

An aging agricultural workforce and the declining availability of skilled labor make it increasingly difficult to meet the growing demands of modern farming.

➔ Lack of Data Use:

Many agricultural decisions rely on intuition or outdated methods, leading to inefficiencies and missed opportunities for optimization.





Solution Overview

AgriTechAI uses advanced technology to tackle these challenges through innovative solutions:

➔ Precision Farming:

AI and IoT deliver farm-specific recommendations, optimizing resource use and maximizing yields.

➔ Crop Health Monitoring:

Real-time data from sensors and imaging systems allow for early detection of diseases, pests, and other issues, enabling timely interventions.

➔ Sustainable Practices:

Smart water management systems, soil health monitoring, and reduced chemical use help protect the environment while enhancing productivity.

➔ Comprehensive Insights:

By integrating multiple data sources, AgriTechAI provides actionable insights that improve decision-making and operational efficiency.

Mission and Vision

Mission

To empower farmers globally with innovative tools and insights that boost productivity, enhance livelihoods, and ensure food security for future generations.

Vision

To harmonize traditional farming wisdom with cutting-edge technologies, creating a smarter, more sustainable, and resilient agricultural industry.

Objectives and Goals

1. Global Standards:

Ensure farmers can meet and exceed Global Good Agricultural Practices (GAP) guidelines, ensuring their produce is market-ready.

2. Global Reach:

Tailor solutions to address diverse agricultural challenges in different regions and environments, fostering worldwide adoption.

3. Process Automation:

Replace labor-intensive activities, such as scouting, with drone-based and AI-powered alternatives to save time and effort.

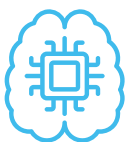
4. Data Accessibility:

Replace labor-intensive activities, such as scouting, with drone-based and AI-powered alternatives to save time and effort.





Technology and Innovation



AI and ML

Use advanced algorithms to analyze vast datasets, offering predictive insights into crop health, pest risks, and yield forecasts.



Satellite & Drone Technology

Combine aerial views with on-the-ground data to provide a comprehensive picture of field conditions and operational needs.



IoT Sensors

Continuously monitor critical factors such as soil moisture, nutrient availability, and climatic variations, ensuring proactive management.



Cloud Integration

Leverage cloud computing to securely store, process, and analyze agricultural data for real-time decision-making.



Services Offered



Precision Farming:

Tailored agronomic solutions that increase productivity and efficiency by addressing specific field requirements.



Soil & Water Management:

Intelligent systems that optimize irrigation schedules, soil nutrient balance, and water usage.



Sustainability Consulting:

Offer guidance on reducing carbon footprints and implementing eco-friendly practices.



Crop Monitoring:

Advanced imaging and sensor technology to detect issues early, reducing losses and improving crop health.



Pest and Disease Control:

Predictive analytics and early-warning systems to mitigate risks before they escalate.

Impact & Benefits

1. Higher Profits:

Increased efficiency and optimized input use lead to significant cost savings and higher revenues for farmers.

3. Improved Yields:

Data-driven decisions help farmers achieve higher productivity, ensuring food security and economic stability.

2. Resource Conservation:

Smart use of water, energy, and fertilizers ensures long-term sustainability while minimizing waste.

4. Environmental Benefits:

Reduction in chemical usage and better resource management contribute to ecological balance and biodiversity.

Components

➔ Onboard Components:

Advanced Sensors: Monitor key indicators such as soil moisture, temperature, crop health, and environmental conditions.

High-Resolution Imaging Systems: Capture detailed images to identify pest infestations, nutrient deficiencies, and other issues.

GPS and Guidance Systems: Enable precise planting, spraying, and harvesting to maximize efficiency.

Wireless Connectivity: Ensure seamless data transmission between field devices and central systems for real-time monitoring.

➔ Offboard Components:

Cloud Storage: Securely store and manage large volumes of agricultural data for easy access and analysis.

Machine Learning Tools: Generate predictive models to guide farm management decisions and optimize operations.

Unified Data Platforms: Consolidate diverse datasets to provide a holistic view of farm activities and facilitate collaboration among teams.





Solution Overview

AgriTechAI prioritizes environmentally friendly farming practices by:



Reducing the reliance on harmful chemicals through precise application techniques.



Implementing water conservation strategies that align with sustainable development goals.



Ensuring compliance with global agricultural standards to enhance marketability and consumer trust.



Promoting biodiversity and ecological health by minimizing the environmental footprint of farming operations.



Contact Us



35th Floor, Tower Financial Center, 50th Street and Corner of Elvira Mendez Street, Panama City, Panama



www.vibrosteck.com



info@vibrosteck.com



+507 63016312